

# QUICK START GUIDE - for LiveCore™ series

## Shot Box - Ref. SB-80

### WHAT'S IN THE BOX

- 1 x **SB-80 Shot Box**
- 1 x Carrying case
- 1 x USB stick containing both the Windows and MAC OS X setup applications\*
- 1 x Quick start guide for LiveCore™ series\*
- 1 x Quick start guide for Midra™ series\*

\* *The quick start guide and the setup applications are also available on [www.analogway.com](http://www.analogway.com)*

### SYSTEM REQUIREMENTS AND LIMITATIONS



**Windows:** Microsoft® Windows® XP with SP3, Microsoft® Windows® 7 with SP1, Windows 8, Windows 8.1 or above 50 MB of available hard-disk space for installation. LAN connection



**Mac OS:** Mac OS X Lion v10.7, Mac OS X Mountain Lion v10.8, Mac OS X Mavericks v10.9 or above 50 MB of available hard-disk space for installation. LAN connection

**Shot Box for LiveCore™ series** can only connect one single **SB-80 Shot Box** device at a time and does not support LiveCore™ firmware versions prior to version 1.3.x.

### QUICK INSTALL AND SETUP

#### • Installing Shot Box for LiveCore™ series on Windows

Plug the USB stick provided with the package then locate the **Shot Box for LiveCore™ series** installer for Windows (the file name is **SetupShotBoxLiveCore\_<version>.exe**). You can also download the latest updates from the Shot Box download area on [www.analogway.com](http://www.analogway.com). Double-clicking this file will launch the installer that will install **Shot Box for LiveCore™ series** on your system.

#### • Installing Shot Box for LiveCore™ series on Mac OS X

Plug the USB stick provided with the package then locate the **Shot Box for LiveCore™ series** installer for Mac OS X (the file name is **SetupShotBoxLiveCore\_<version>.pkg**). You can also download the latest updates from the Shot Box download area on [www.analogway.com](http://www.analogway.com). Double-clicking this file will launch the installer that will install **Shot Box for LiveCore™ series** on your system.

#### • Configuring Shot Box for LiveCore™ series

Plug your **SB-80 Shot Box** into the USB port and wait for your system to recognize it. When you plug a USB **Shot Box** device into a Mac for the first time, the Keyboard Setup Assistant will launch automatically. Close this assistant to continue. When ready, start the **Shot Box for LiveCore™ series** application:



The application tries to detect and connect the **Shot Box**. It may take a few seconds for the application to succeed. In case of failure, **Shot Box for LiveCore™ series** indicates an error and will attempt to reestablish a new connection with the device once every 3 seconds. When detected, the application indicates the type of **Shot Box** connected and let you adjust the LED backlight intensity.

Enter the IP address of the Analog Way LiveCore™ Switcher you want to connect as well as the corresponding TCP port number (default is 10600).

If you intend to use the Shot Box for recalling Master Presets, make sure to select the option **Master Presets**. However, if you intend to use the Shot Box for recalling Screen Presets, make sure to select the option **Screen Presets** and then choose the corresponding screen index (from 1 to 8 depending on your configuration).

Select the destination (**Preview** or **Program**). If the Preview destination has been selected then you can also enable the **Take on Load** option that will automatically transition the Preview content to the Program once a Screen Preset or a Master Preset has been recalled from memory.

When ready, click **Connect** to attempt a connection to the remote host. Make sure your firewall is opened for the entered port number. If the connection is successful, the application displays **Connected and ready** as well as the type of LiveCore™ Switcher detected. The green LED indicator in the upper-left corner is enabled. In case of failure, **Shot Box for LiveCore™ series** displays an error message and the LED indicator in the top-left corner blinks red.

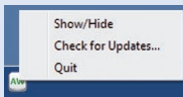
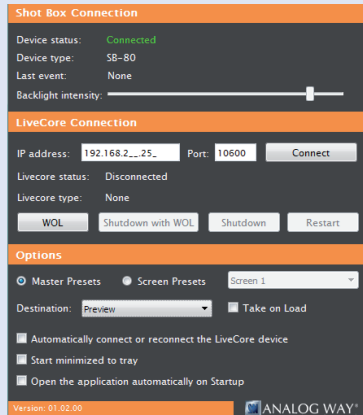
If you would like for **Shot Box for LiveCore™ series** to start each time your system starts, you can check the box **Open the application automatically on Startup**.

If you would like for **Shot Box for LiveCore™ series** to connect automatically the LiveCore™ Switcher each time the application starts or when it gets disconnected, you can check the box **Automatically connect or reconnect the LiveCore™ device**.

If you would like for **Shot Box for LiveCore™ series** to start minimized to tray, you can check the box **Start minimized to tray**.

If you need to reboot (turn off and turn back on) the LiveCore™ Switcher remotely, simply click **Restart**. If you want to turn it off, choose **Shutdown**. In this case the LiveCore™ Switcher will have to be restarted manually. If you would like for the LiveCore™ Switcher to shutdown with Wake-On-Lan feature enabled, click **Shutdown with WOL**. In this mode, you will be able to power up the LiveCore™ Switcher from your network remotely by clicking the **WOL** button (WOL feature requires LiveCore™ firmware 1.04.x or above).

To terminate the program, choose **Quit** in the context menu of the system tray entry.



## RUNNING SHOT BOX FOR LIVECORE™ SERIES

Once your **SB-80 Shot Box** device detected and a connection to the LiveCore™ switcher established, each individual key LED backlight will reflect the corresponding Master Preset or Screen Preset availability on the system as well as the corresponding Monitoring Preset availability.

The **SB-80 Shot Box** supports 140 Master Presets or 140 Screen Presets in total (2 pages of 70 Master Presets or Screen Presets depending on your configuration) and 8 Monitoring Presets (2 pages of 4 Monitoring Presets).

For more information about Master Presets, Screen Presets and Monitoring Presets, please refer to your LiveCore™ product manual.

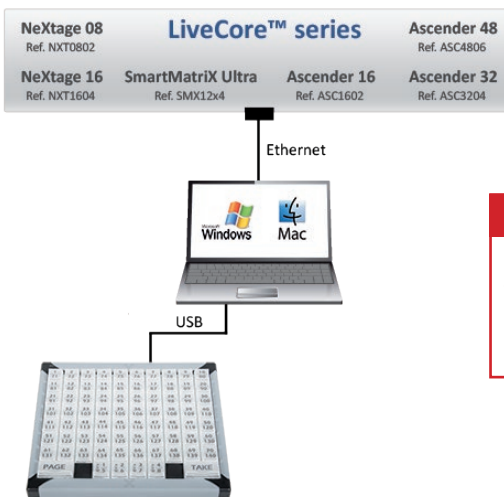
To switch from one page to the other (and vice versa), simply press the **PAGE** key on the **SB-80 Shot Box** device. Blue backlighting indicates Page 1. Red backlighting indicates Page 2. If a Master Preset or a Screen Preset key backlight is turned off, this means that the corresponding Master Preset or Screen Preset memory is empty. If a Monitoring Preset key backlight is turned off, this means that the corresponding Monitoring Preset memory is empty.

To recall a Master Preset or a Screen Preset from memory into the selected destination, press the corresponding key on your **SB-80 Shot Box** device. If the selected destination is Preview, the key backlight starts blinking. To recall a Monitoring Preset from memory, press the corresponding key on your **SB-80 Shot Box** device.

To send the current Preview configuration to the Program output, press the **TAKE** key on the **SB-80 Shot Box** device.

The Master Preset or Screen Preset key illuminates in contrasting color after the **TAKE** to indicate that this preset has been selected on program.

## DIAGRAM



### WARNING!

Connect the Shot Box USB cable directly to your computer - Do not connect the Shot Box USB cable on the front of your LiveCore™ series device.

## —○ TROUBLESHOOTING SHOT BOX FOR LIVECORE™ SERIES

Should you encounter difficulty with **Shot Box for LiveCore™** series application, you may contact our technical support department at [techsupport@analogway.com](mailto:techsupport@analogway.com).

Please attach the application log file to your email.

This log file can be found here:

### **For Windows® XP:**

*C:\Documents and Settings\[user]\Application Data\ShotBoxLiveCore\ShotBoxLiveCore\_Log.txt*

### **For Windows® 7 or above:**

*C:\Users\[user]\AppData\Local\ShotBoxLiveCore\ShotBoxLiveCore\_Log.txt*

**Note:** If you can't locate the log file, the AppData folder may not be visible. To make this folder visible, check the **Folder Options** settings for the [User] folder. Click **Organize**, and then click **Folder and search options**. Click the **View** tab. Make sure that **Show hidden files, folders, and drives** is selected.

### **For Mac OS X:**

*/Users/[user]/Library/Application Support/ShotBoxLiveCore/ShotBoxLiveCore\_Log.txt*

**Note:** If you can't locate the log file, your Library folder may be hidden. Open **Finder**. To make your Library folder visible, press and hold the "option" key while you click the **Go** menu. The **Library** folder displays. Still holding down the "option" key, click **Library** to display the contents of the Library folder.

## —○ WARRANTY CONDITIONS

This product has a 1 year warranty on parts and labor, back to factory. This warranty does not include faults resulting from user negligence, special modifications, electrical surges, abuse (drop/crush), and/or other unusual damage. In the unlikely event of a malfunction, please contact your local Analog Way office for service.