

# QUICK START GUIDE - for Midra™ series

## Shot Box - Ref. SB-80

### WHAT'S IN THE BOX

- 1 x **SB-80 Shot Box**
- 1 x Carrying case
- 1 x USB stick containing both the Windows and MAC OS X setup applications\*
- 1 x Quick start guide for LiveCore™ series\*
- 1 x Quick start guide for Midra™ series\*

\* The quick start guide and the setup applications are also available on [www.analogway.com](http://www.analogway.com)

### SYSTEM REQUIREMENTS AND LIMITATIONS



**Windows:** Microsoft® Windows® XP with SP3, Microsoft® Windows® 7 with SP1, Windows 8, Windows 8.1 or above 50 MB of available hard-disk space for installation. LAN connection



**Mac OS:** Mac OS X Lion v10.7, Mac OS X Mountain Lion v10.8, Mac OS X Mavericks v10.9 or above 50 MB of available hard-disk space for installation. LAN connection

**Important:** The RCS<sup>2</sup> software can only connect one single **SB-80 Shot Box** device at a time.

### QUICK INSTALL AND SETUP

#### • Installing RCS<sup>2</sup> on Windows

Plug the USB stick provided with the package then locate the **RCS<sup>2</sup>** installer for Windows (the file name is **midra\_rcs\_<version>-for-windows.exe**). You can also download the latest updates on [www.analogway.com](http://www.analogway.com). Double-clicking this file will launch an application that will install the **RCS<sup>2</sup>** software on your system.

#### • Installing RCS<sup>2</sup> on Mac OS X

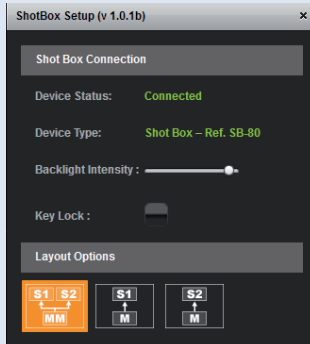
Plug the USB stick provided with the package then locate the **RCS<sup>2</sup>** installer for Mac OS X (the file name is **midra\_rcs\_<version>-for-mac-os.dmg**). You can also download the latest updates on [www.analogway.com](http://www.analogway.com). Double-clicking the .DMG file will open and 'mount' the Mac OS X disk image. When ready, double-click the Install **RCS<sup>2</sup>** icon to install the **RCS<sup>2</sup>** software on your system.

#### • Configuring Shot Box for Midra™ series

Plug your **SB-80 Shot Box** into the USB port of your computer and wait for your system to recognize it. When you plug a USB **Shot Box** device into a Mac for the first time, the **Keyboard Setup Assistant** will appear automatically. Close this assistant to continue. When ready, start the **RCS<sup>2</sup>** application then connect your **Midra™** device as usual. The **RCS<sup>2</sup>** application will automatically try to detect and to connect to the **Shot Box**.

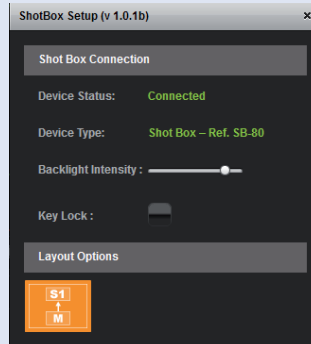


It may take a few seconds for the application to succeed. In case of failure, the **RCS<sup>2</sup>** application will attempt to reestablish a new connection with the **Shot Box** once every 3 seconds. When properly detected, the **RCS<sup>2</sup>** application briefly displays the type of **Shot Box** connected and the status bar indicates the **Shot Box** connection status as well as the selected layout option. Click this area to display the **Shot Box** settings box:



Matrix mode

OR



Mixer/Quadravision mode

Use the slider to adjust the **Shot Box** LED backlight intensity if necessary. You can also temporarily disable the **Shot Box** keys by checking the box **Key Lock**.

If your **Midra™** device is configured in Matrix mode, you can configure the **Shot Box** either to recall presets from Master Memory (two screens simultaneously) or to recall presets from Memory (Screen 1 or Screen 2 only).

## RUNNING SHOT BOX FOR MIDRA™ SERIES

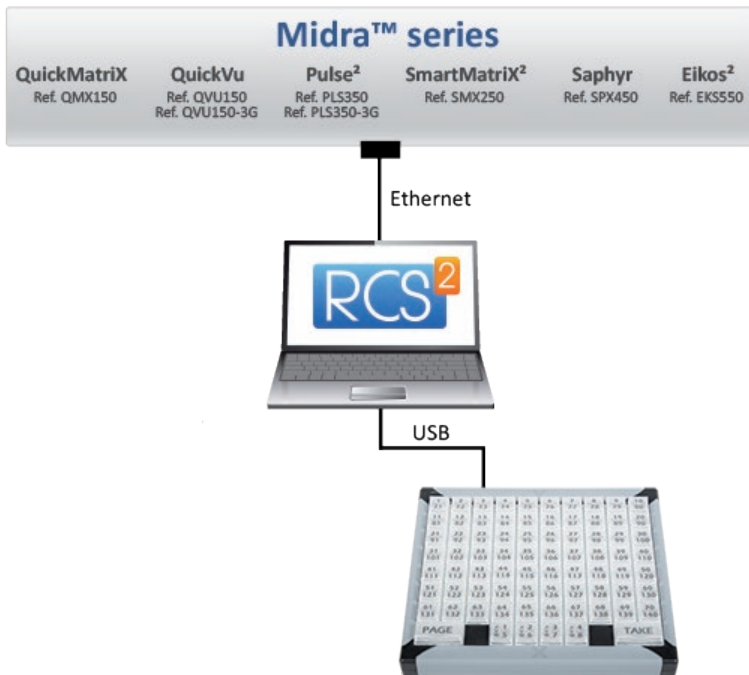
Once your **SB-80 Shot Box** device detected by the **RCS<sup>2</sup>** software, each individual key LED backlight will reflect the corresponding preset availability on the system: If a preset key backlight is turned off, this means that the corresponding preset memory is empty. The **SB-80 Shot Box** supports up to 64 presets (preset keys 65 to 70 and monitoring preset keys are always disabled and reserved for LiveCore™ series). For more information about presets, please refer to your **Midra™** product manual.

To recall a preset on your Preview monitor, press the corresponding key on your **SB-80 Shot Box** device. The key backlight starts blinking.

To send the current Preview configuration to the Program output, press the **TAKE** key on the **SB-80 Shot Box** device.

The preset key illuminates in contrasting color after the **TAKE** to indicate that this preset has been selected on program.

## DIAGRAM



## —○ TROUBLESHOOTING SHOT BOX FOR MIDRA™ SERIES

Should you encounter difficulty with RCS<sup>2</sup> application, you may contact our technical support department at [techsupport@analogway.com](mailto:techsupport@analogway.com).

## —○ WARRANTY CONDITIONS

This product has a 1 year warranty on parts and labor, back to factory. This warranty does not include faults resulting from user negligence, special modifications, electrical surges, abuse (drop/crush), and/or other unusual damage. In the unlikely event of a malfunction, please contact your local Analog Way office for service.